



ELECTRONIC PARCEL DELIVERY SYSTEM

INSTRUCTIONS

Version: v1.0

Date: March 15, 2013

Corporation: Excelsior Metal Products LLC

Tel: 800 919-4422 732 651-9914

Tax: 732 651-9980

Email: Sales@excelsiorlockers.com

Http: <http://www.excelsiorlockers.com>

Operation Process

- Enter a new order
- Delivering to the Excelsior terminal
- Courier RFID management-card
- Scan barcode。
- Terminal access to an available locker
- Deposit package and close the door
- Excelsior terminal sends a message to Server using GPRS.
- Server sends text message to customer's phone or sends email
- Customer goes to the terminal for package retrieval

Detailed Instructions

Preparation

i. Start IDC Server

a) Start Software:



Double-click  to start "Intelligent Distribution Cabinet Server".

Then it will show at the lower right of the screen like this:



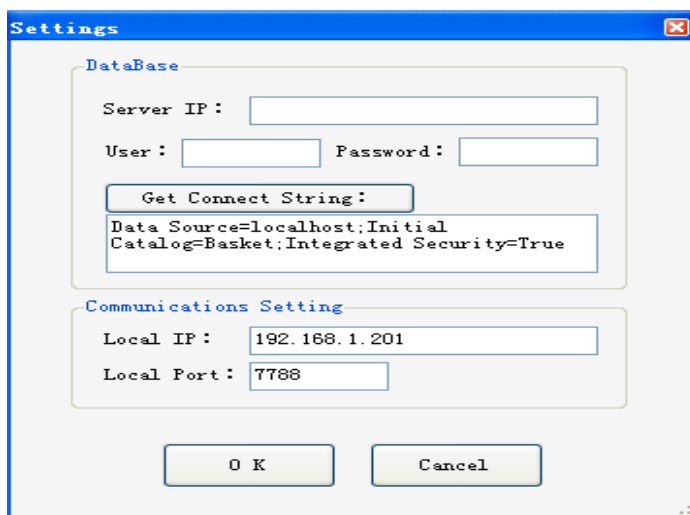
b) Set parameters:

Right-click the icon, Then it will show a Pop-up menu like this:



StartUP: Set the software start with System. Tick-Yes; Blank-No

Setting: Set the parameters. Click this to show window "Settings", Then set appropriate parameters to make the software work correctly.



(**Concernment**: local IP is different in different PC)

DataRecord: Show communication data.

Quit: close the Software

ii. Start IDC Manager

a) Start software



Double-click to start "Intelligent Distribution Cabinet Manager".

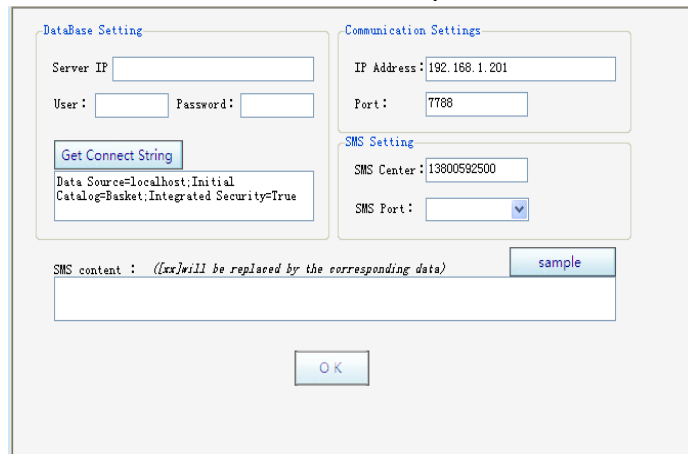
Then it will show:

Click "Login" then it shows



b) Set Parameters

Click "System" to show Window "System". Then Set appropriate parameters to make the software work correctly.



(**Concernment**: local IP is different in different PC)

iii. Start Terminal

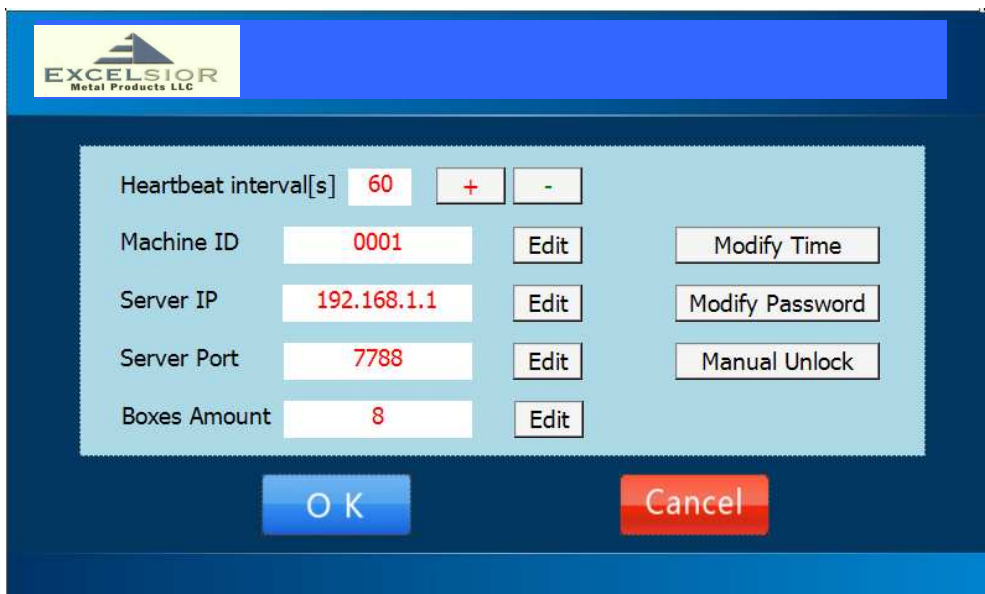
a) Power On

b) Set Parameters



Click  to show Window “System settings”.

Then Set appropriate parameters to make the software work correctly.



Concernment :

1. “Machine ID”: This must be unique.
2. “Server IP”: The Server’s Wan IP Address.

iv. Virtual Server

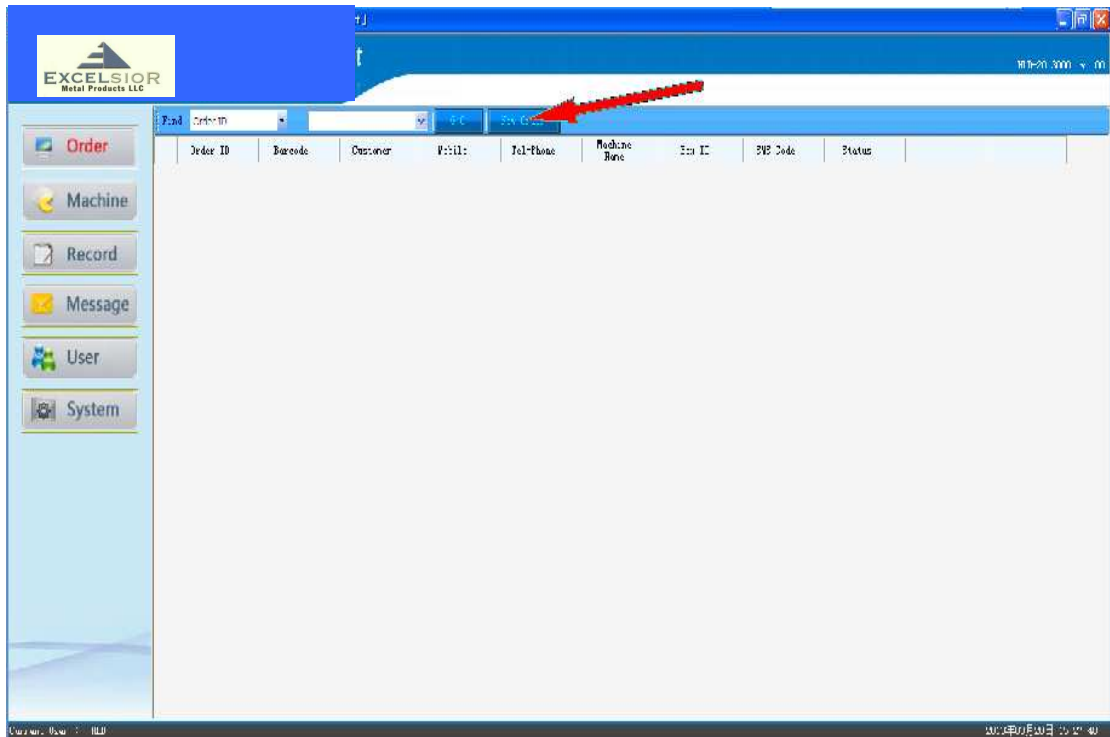
If your PC is in the Lan,you should set up a virtual Server first.See more at

<http://web.belkin.com/support/kb/kb.asp?a=1448> and

<http://www.webcamsoft.com/en/faq/belkin.html>

Book an order

Click “New Order” button to show window “Add New Order”.

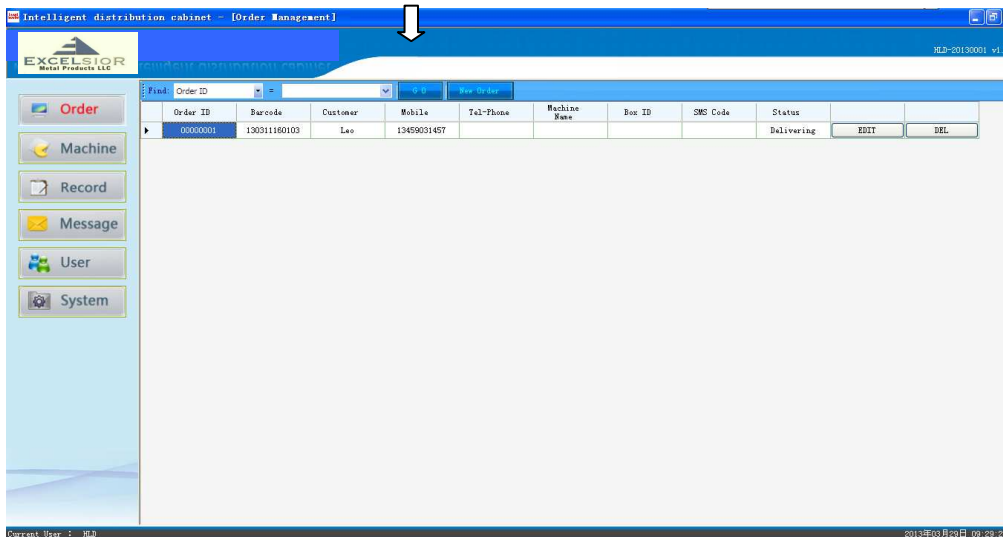


The 'Add New Order' dialog box contains the following fields and buttons:

Order ID :	<input type="text" value="00000001"/>
Barcode :	<input type="text" value="130311160103"/>
Customer :	<input type="text" value="Leo"/>
Mobile :	<input type="text" value="13459031457"/>
Tel-Phone :	<input type="text"/>

Buttons:

Fill all textBox then click “Add” button.



A new order has been added. And its status is "Delivering".

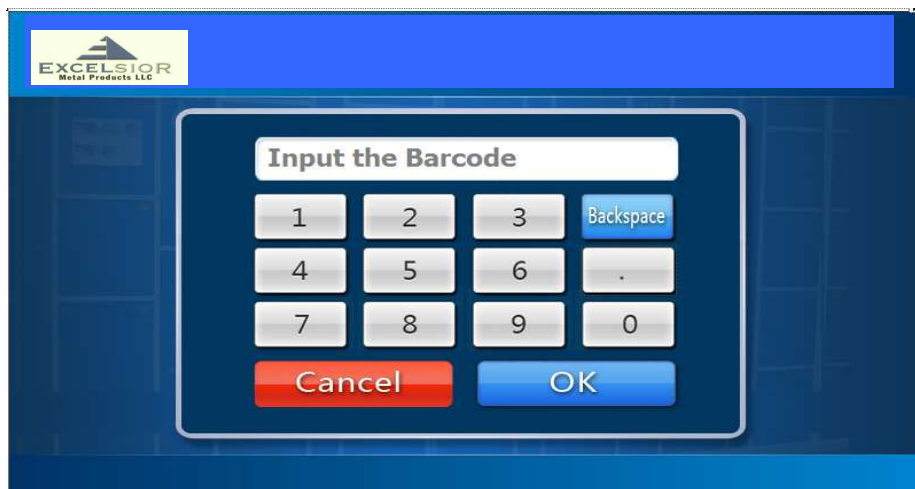
Courier delivery goods



.....
.....

Depositing goods

1. Courier Administrator card, Then it will show window below:



2. Use Barcode scanner scan barcode or input it manual. Then Click "OK"
3. Terminal open an empty box

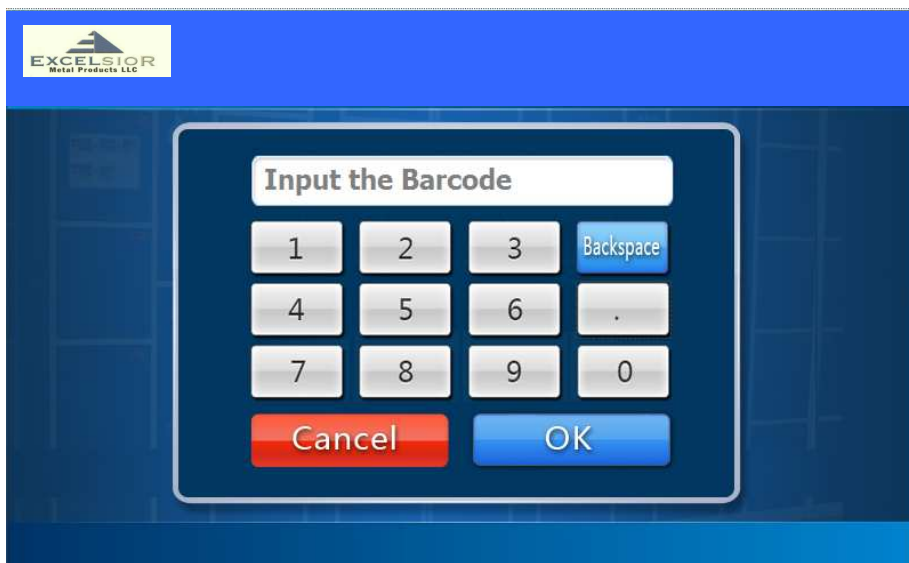


4. Deposit goods and close the door
5. Terminal Send a message to server
6. When server receive the message. The order's status is changed to "Deposited". And Server will send a phone message which contains verification code, order barcode and terminal information to the customer.

Pick-Up goods



1. Click "Pick-Up" ,Show "Input Barcode" window Below



2. Input the Barcode,if finish click "OK" ,Show "Input Msg code" window Below



3. Input the SMS code, then click "OK" .
4. Terminal open the box

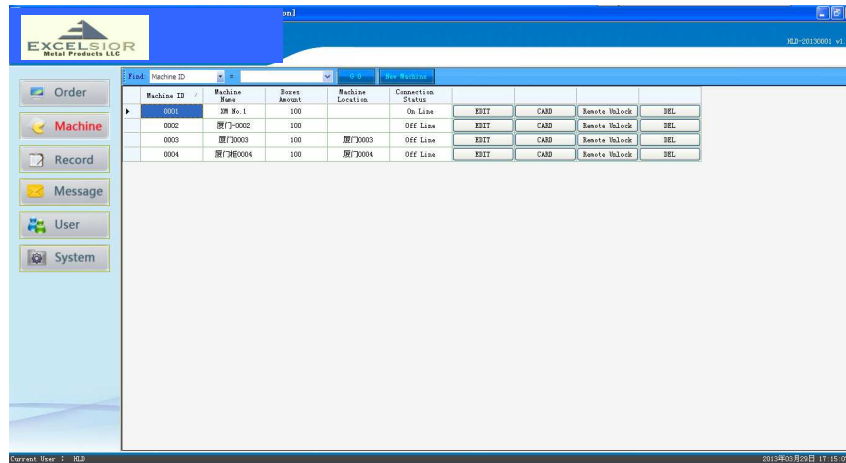


5. Take goods and close the door
6. Terminal Send a message to server
7. When server receive the message. The order's status is changed to "Completed".

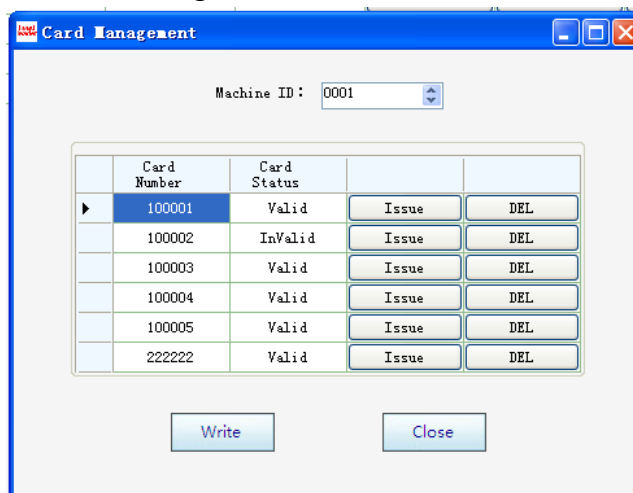
Other Features

i. Intelligent Distribution Cabinet Manager

a) Card-Issuing

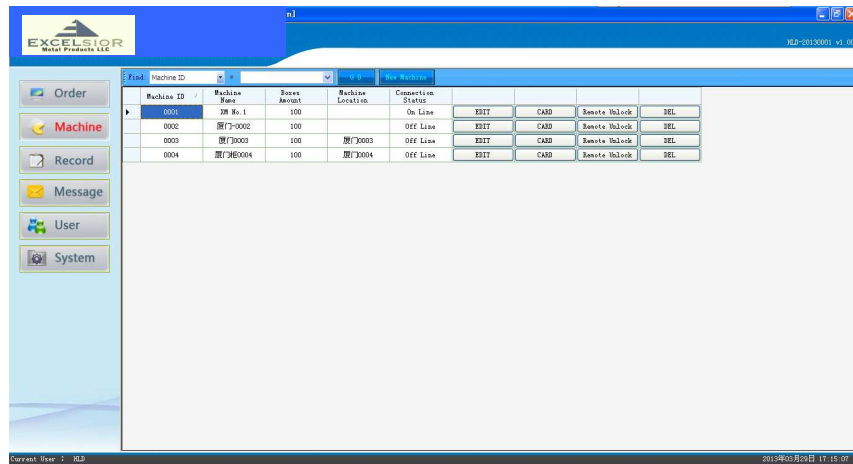


1. Choose a Row and then Click “CARD” to show window “Card Management”

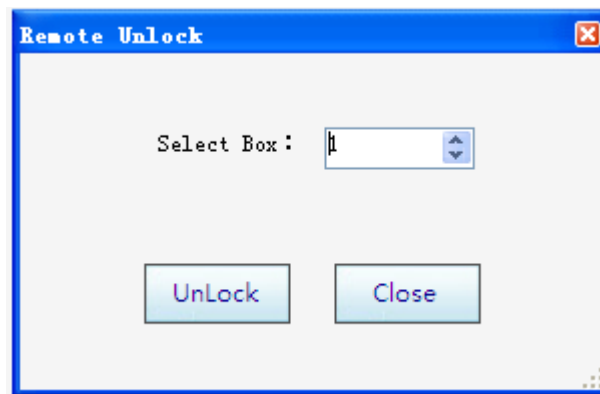


2. Click “Issue” to Issue Card-Information to a IC-Card.
3. Click “Write” to write Card-Information to the Machine.
4. Click “Close” to close this window

b) Remote-Unlock



1. Choose a Row and then Click “Remote Unlock” to show window “Remote Unlock”




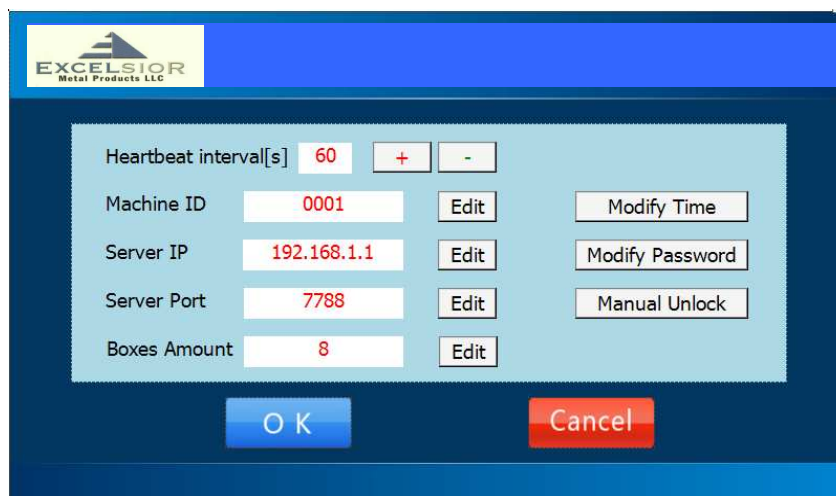
2. Select a box then click “UnLock” button to unlock the machine’s box.
3. Click “Close” to close this window

ii. Intelligent Distribution Cabinet Terminal

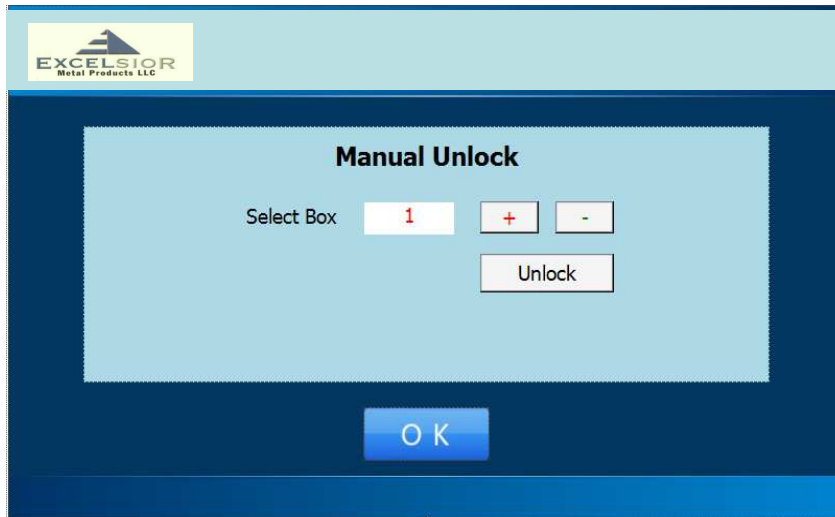
a) Manual Unlock



1. Click  to show window "System settings"



2. Click "Manual Unlock" button to show window "Manual Unlock"



3. Click "+" or "-" to select a box, then click "Unlock" to unlock it